

WEST SHORE BUREAU OF FIRE

*First Responders Providing Fire, Emergency,
Disaster and Rescue Services in Lemoyne and Wormleysburg*



HELP US STAND READY FOR THE FUTURE



The time has come to construct a new, more functional fire station in Lemoyne. The proposed location is in a plot of land adjacent to the Lemoyne Borough Building.

A new 10,300 square foot facility in Lemoyne will provide an energy-efficient, centrally-located station that will effectively, efficiently, and successfully handle fire, emergency, disaster, rescue, and other life-threatening situations.

A new station would provide the following:

- Equipment bays large enough to accommodate newer, more complicated apparatus, which continues to get larger due to National Fire Protection Association requirements.
- Enhanced technology with up-to-date networks, equipment, software, and reliable access to online resources for hazardous material mitigation, fire protection systems, satellite photographs, maps, and other communications equipment.
- Rooms to accommodate offices, meetings, and training with audio-visual equipment, and space for live-in firefighters.
- Basic accommodations that will enable WSBF to recruit and retain students who are taking fire training, public safety, and related courses at local educational institutions.
- Storage for food, water, medical, and emergency supplies.
- Emergency generators and other facilities sufficient to care for those in need of aid or to serve as a safe destination in the event of a local disaster.

The architect's rendering above shows the proposed station with apparatus bays.

OUR JOURNEY

More than 100 years ago, residents of Lemoyne and Wormleysburg established bucket brigades so that neighbors could respond when fires struck. Through the decades, the fire companies overcame many obstacles, and, whatever the circumstances, neighbors gave of their time, talents, and financial resources to assure the companies were strong.

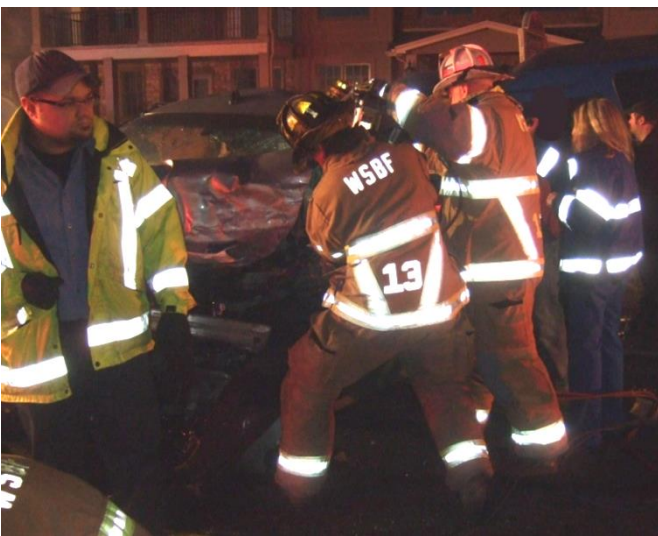


1922 Photo courtesy of The Gateway Historical Society.

In the 1990s, the Citizens (Lemoyne) and Wormleysburg fire companies responded to another wave of change. New dwelling units and businesses were being built; highway reconstruction and hazardous materials were increasing the danger from transportation-related accidents; volunteerism was down, and calls for mutual aid became more frequent. So, in 1999, the two companies put the needs of residents first and came together to form the West Shore Bureau of Fire (WSBF).

WSBF proudly continues a legacy of public service, but there is no shortage of new challenges. The risks for volunteers continue to increase as does the need to keep them safe. Since 9/11/2001, governments at all levels have called upon local fire companies to be ready for whatever comes. The Department of Homeland Security has amplified every aspect of emergency preparedness, and requirements for first responders only intensify. In addition to handling its own local emergencies, WSBF helps neighboring communities that rely on it for mutual aid assistance, which is returned when needed.

In this environment, WSBF has been looking for new ways to serve and protect public safety. The critical keystone in our strategic plan is to build a modern fire station in



Lemoyne. The needs are obvious and utterly undeniable. The 98-year-old Lemoyne Station has long outlived its usefulness. Despite extensive renovations since the 1950's, the facility is just too small. It barely accommodates newer apparatus and support vehicles—which are larger and heavier—and it offers few of the functionalities needed to operate efficiently and cost-effectively.

For these and many other reasons, WSBF is proposing to build a new firehouse that will address its operating needs and safety issues for years to come.

FUNDING CHALLENGE - \$2.5 MILLION

The total project is estimated at \$2.5 million dollars, which is a significant investment. **WSBF is launching a capital campaign to invite families, businesses, community leaders, property owners, and others to make contributions.** During the fundraising campaign, WSBF will seek funding from federal, state, county and municipal funders; however, it is unlikely that grants will fund more than 20% of the cost and probably less. We also anticipate that approximately 10% of the project cost could be funded with a mortgage; however, our goal is to keep that amount to a minimum. Fundraisers and local government contributions will not be sufficient. **Your contribution is vital. We ask for your philanthropic support.**

<p>Average Monthly Service Number of Calls: 50 Calls for Mutual Aid: 30 Structure Fires: 12 Miles Traveled: 350 Training: 12-15 Hrs./person</p>



HOW TO GIVE

Please stand with WSBF to begin a new chapter of community service. Your gift to the campaign will be used to build the new WSBF fire station. A listing of commemorative opportunities and locations for donor recognition will be available on the website.

- Checks
 - Mail checks payable to "WSBF Campaign" to: WSBF, 510 Herman Ave., Ste 3, Lemoyne, PA, 17043
- Memorial Gifts and Honor Designations
 - Gifts of \$1,000 and up made in memory of or in honor of a loved one will be recognized on a Tribute Wall in the new facility. (Rendering not yet available.)
- Pledges
 - Three-year pledges are available. Reminders will be mailed in October annually.
- Bequests
 - Please remember WSBF in your will or estate plan.

WEST SHORE BUREAU OF FIRE

510 Herman Avenue • Lemoyne, PA 17043

www.standready.wsbf.org • 717-737-2924

Station 1

326 Herman Avenue
Lemoyne, PA 17043

Station 2

18 Market Street
Wormleysburg, PA 17043

WSBF QUESTIONS & ANSWERS



Why This Design?

WSBF invested time to understand the community's needs and risks, and designed a viable project. The architect's study found that tearing down and rebuilding at the current Lemoyne location would be nearly as expensive as a new, larger building. However, given the size, scope, and cost of the project, it makes no sense to build a smaller building on an undersized lot that would quickly be over-utilized.

The \$2.5 million dollar investment is better used to build a facility to meet current and long-term needs, and provide sufficient parking and room for growth. The new facility positions WSBF not only to meet current community needs, but also fulfill its growing mission for the next 25 years. The plan includes room to expand.

Can the project be built in phases?

While the purchase of some capital items—such as furniture, fixtures, and computers—can be delayed until funding is available, once the building begins, it will have to be completed to 95% of its entirety, which is expected to be 18 months from groundbreaking.

Why Recruit Local College Students for the Fire Company?

Our goal is to remain a volunteer company for as long as possible. However, the number of volunteer fire fighters has been going down. In the 1970's, Pennsylvania had more than 300,000; by the end of the 1990's, the number of volunteers had dropped to 75,000. Today, the West Shore Bureau of Fire is staffed by 25 part-time volunteer fire fighters who provide round the clock fire and rescue services to more than 7,500 residents in the two boroughs. Students in fire safety and related courses at local colleges are in great demand, and local companies compete to recruit and retain them to supplement volunteers. In turn, the students receive room and board and hands-on, real-life experience in their fields.

Will the Boroughs help?

Lemoyne and Wormleysburg Boroughs already provide annual operating support equal to 80% of the budget based on population data. The remaining 20% comes from community fundraising activities. The annual allocation, which is based on 2010 census data, splits 60% of the cost to Lemoyne; Wormleysburg provides 40%.

Will you help?

Please give as generously as you can. We realize that, in these economic times, it may be a challenge for some to contribute. Based on population, each individual would need to contribute \$500 to underwrite the entire project without government funding. WSBF is grateful to receive whatever you can give. Thank you.

PLEASE MAKE YOUR GIFT TODAY SO THAT WE CAN ...

STAND READY FOR THE FUTURE